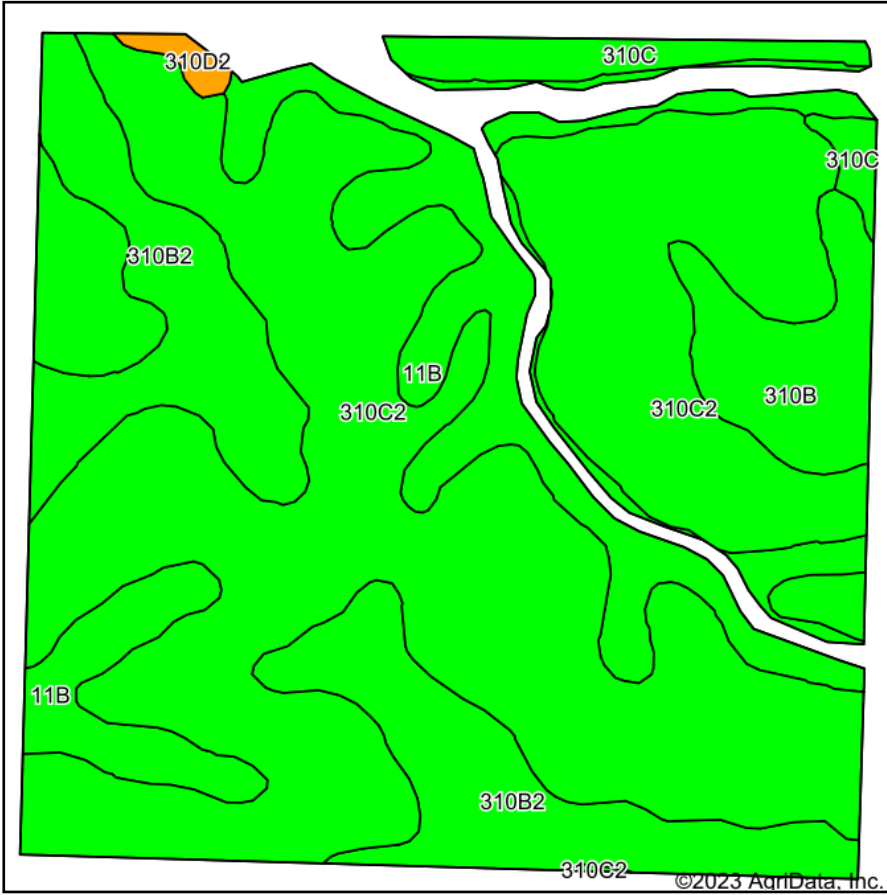
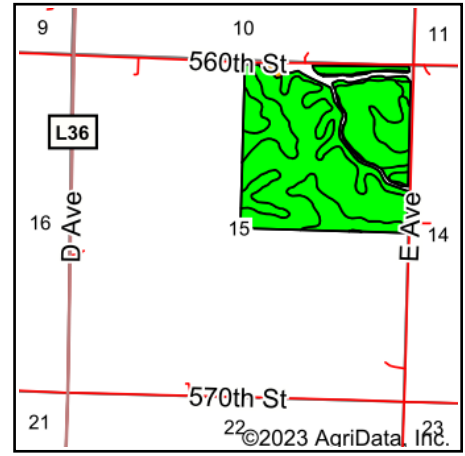


# Soils Map



Soils data provided by USDA and NRCS.



State: **Iowa**  
 County: **Cherokee**  
 Location: **15-91N-42W**  
 Township: **Tilden**  
 Acres: **148.24**  
 Date: **9/19/2023**



Maps Provided By:



Area Symbol: IA035, Soil Area Version: 32

Code	Soil Description	Acres	Percent of field	CSR2 Legend	Non-Irr Class *c	CSR2**	CSR	*n NCCPI Soybeans	
310C2	Galva silty clay loam, 5 to 9 percent slopes, eroded	89.32	60.3%		IIIe	84	54	65	
310B2	Galva silty clay loam, 2 to 5 percent slopes, eroded	23.61	15.9%		Ile	90	69	67	
11B	Colo-Judson silty clay loams, 0 to 5 percent slopes, occasionally flooded	22.09	14.9%		IIw	80	59	81	
310B	Galva silty clay loam, 2 to 5 percent slopes	8.10	5.5%		Ile	95	71	75	
310C	Galva silty clay loam, 5 to 9 percent slopes	4.41	3.0%		IIIe	87	56	77	
310D2	Galva silty clay loam, 9 to 14 percent slopes, eroded	0.71	0.5%		IIIe	57	44	60	
<b>Weighted Average</b>						<b>2.64</b>	<b>84.9</b>	<b>58.1</b>	<b>*n 68.6</b>

\*\*IA has updated the CSR values for each county to CSR2.

\*n: The aggregation method is "Weighted Average using all components"

\*c: Using Capabilities Class Dominant Condition Aggregation Method

Soils data provided by USDA and NRCS.