

LAND AUCTION

80.24 Surveyed Acres • O'Brien County, Iowa

Tuesday, July 12 • 10:00 AM

Primghar Community Building | 215 1st St SE, Primghar, Iowa

Property Location: From Primghar go east 2 miles on B40, south 3 miles on L54, east 2 miles on 420th St, then south ½ mile on Tyler Ave. Farm is on the west side.

Legal Description: The South Half (S 1/2) of the Northeast Quarter (NE ¼) of Section 23, Township 95 North, Range 40 West of the 5th P.M., O'Brien County, Iowa.

Cropland Acres: 79 acres

Corn Base: 45 acres

Soybean Base: 25 acres

CSR2: 94.8

Primary Soil: Galva

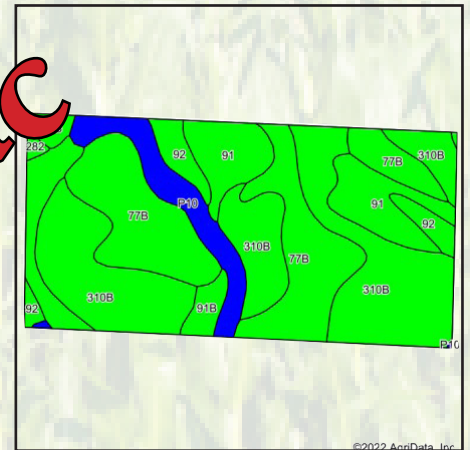
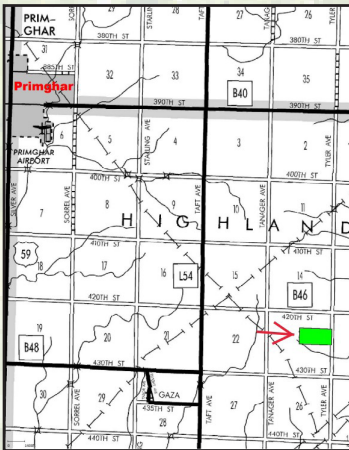
*Lease is open for 2023

PLC Yield: 177 bushels/acre

PLC Yield: 49 bushels/acre

Real Estate Taxes: \$2,258

Secondary Soils: Sac & Primghar



For online bidding and for sale terms visit: stalcupag.com



Providing Direction, Delivering Results Since 1942

stalcupag.com

For additional information, please contact:



**Chad Husman, AFM or
Kent Smith, AFM**
Storm Lake, Iowa
Office: (712) 732-4811
Evenings: (712) 291-5631 (Chad)
chusman@stalcupag.com
kksmith@stalcupag.com



Farm Management • Appraisals • Consultations • Farm Real Estate

The information contained herein is believed to be correct, but no responsibility therefor is assumed by the owner or broker.