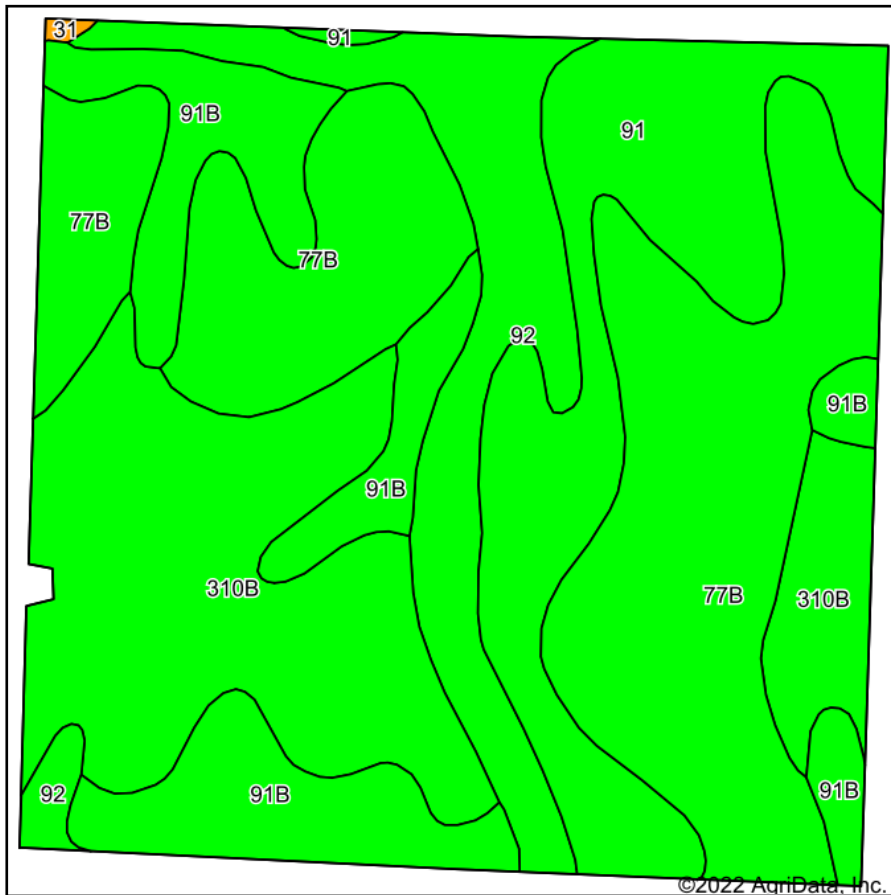
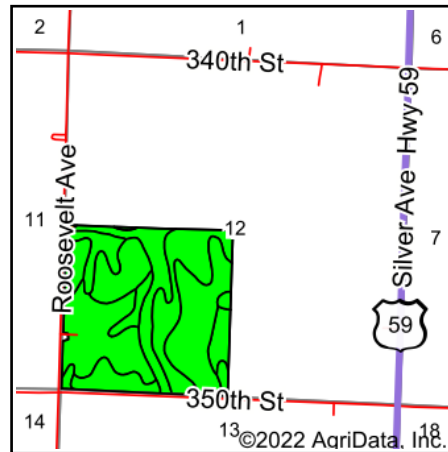


Vilmain - Soil Map



Soils data provided by USDA and NRCS.



State: **Iowa**
 County: **O'Brien**
 Location: **12-96N-41W**
 Township: **Summit**
 Acres: **153.31**
 Date: **6/1/2022**



Area Symbol: IA141, Soil Area Version: 26

Code	Soil Description	Acres	Percent of field	CSR2 Legend	Non-Irr Class *c	*i Corn Bu	*i Soybeans Bu	*i Water-Holding Inch	CSR2**	CSR	
77B	Sac silty clay loam, loam substratum, 2 to 5 percent slopes	49.99	32.6%		Ile	232.0	67.3	10.5	95	68	
310B	Galva silty clay loam, 2 to 5 percent slopes	36.51	23.8%		Ile	232.0	67.3	12.3	95	70	
91	Primghar silty clay loam, 0 to 2 percent slopes	25.10	16.4%		Iw	240.0	69.6	11.7	100	80	
91B	Primghar silty clay loam, 2 to 5 percent slopes	23.08	15.1%		Ile	232.0	67.3	11.7	95	78	
92	Marcus silty clay loam, 0 to 2 percent slopes	18.44	12.0%		Ilw	230.4	66.8	12.1	94	75	
31	Afton silty clay loam, 0 to 2 percent slopes, occasionally flooded	0.19	0.1%		Ilw	204.8	59.4	11.8	80	72	
Weighted Average						1.84	233.1	67.6	11.5	95.7	72.8

**IA has updated the CSR values for each county to CSR2.

*i Yield data provided by the ISPAID Database version 8.1.1 developed by IA State University.

*c: Using Capabilities Class Dominant Condition Aggregation Method

Soils data provided by USDA and NRCS.